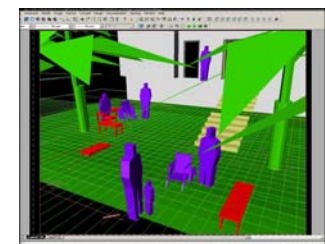
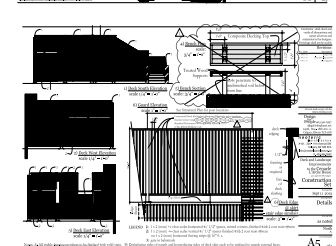


CAD file started over
Digitized Sketch

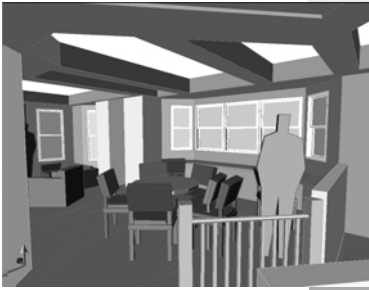


CAD Rendered Massing



Built Result *(further evolved)*

Typical Interior SpaceStudy quick-traced over AutoCAD Massing Model, Finished in TVPaint



Design
for
People

Ashenhurst/Hill Residence
View from Kitchen Into Nook

Built Result
(further evolved)

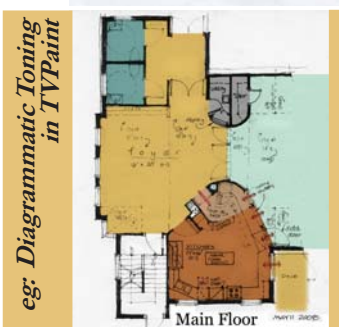
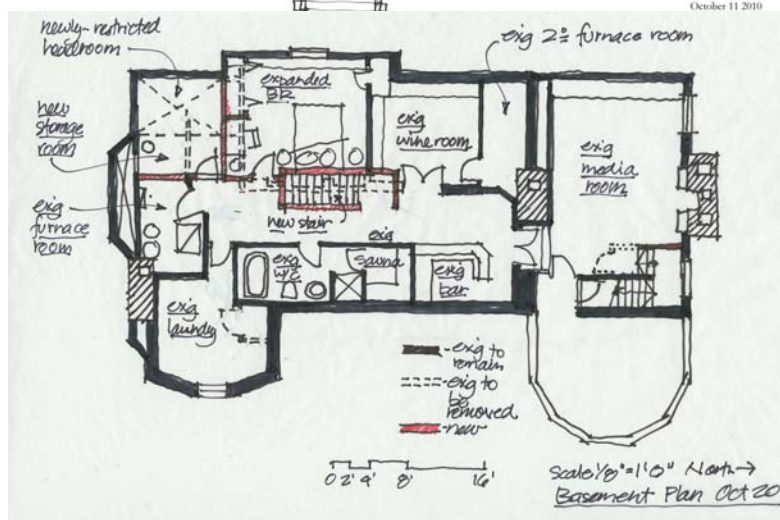
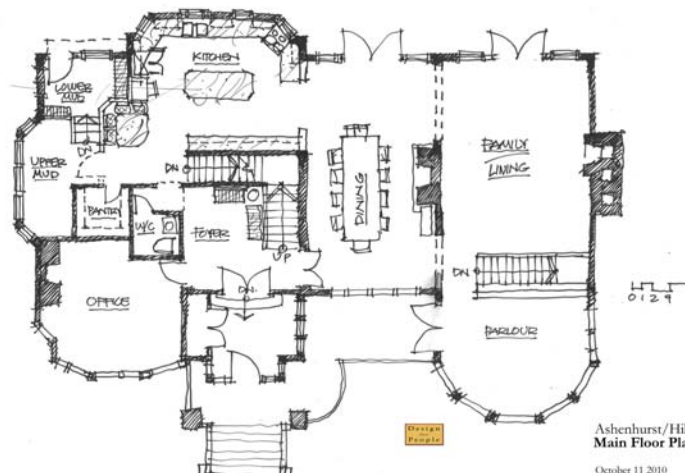
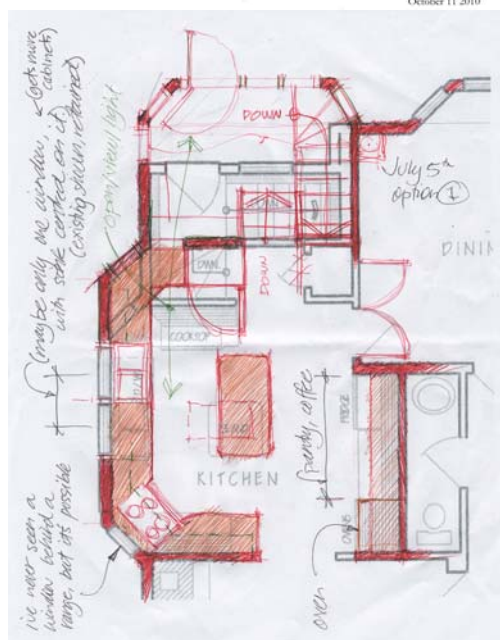
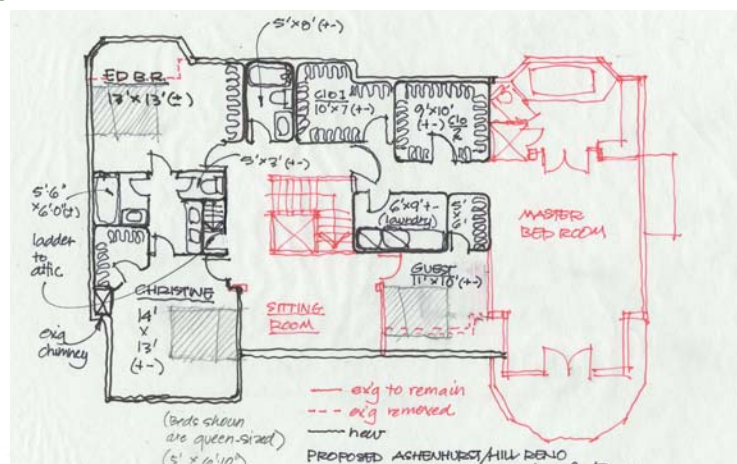
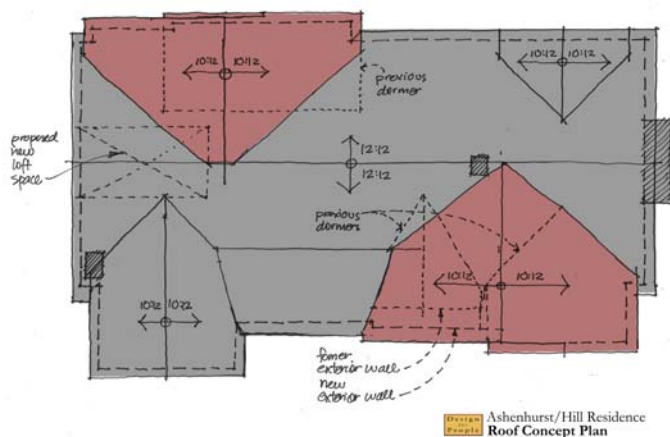
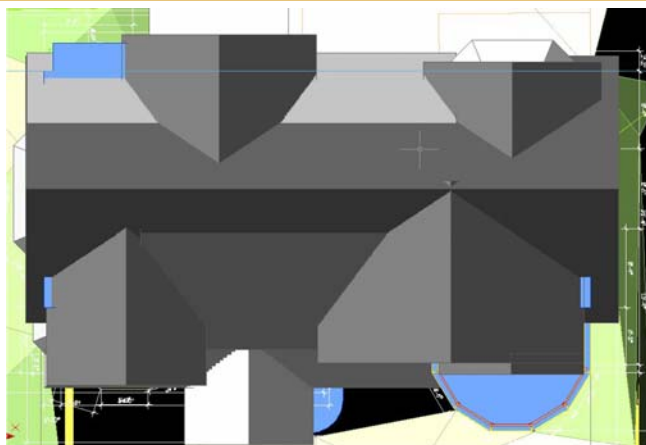


*Typical Colour/Detail Study
quick-traced over AutoCAD Massing Model
Finished in TVPaint*



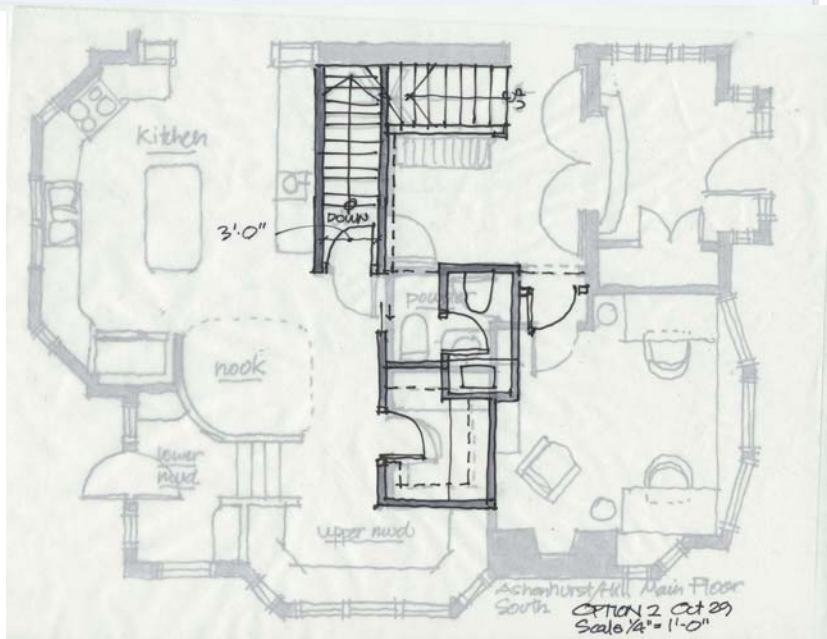
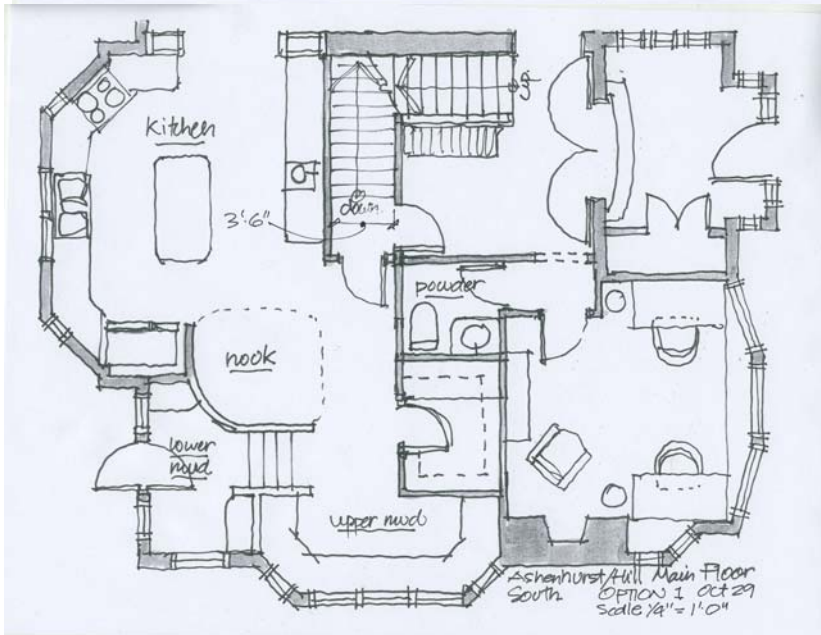
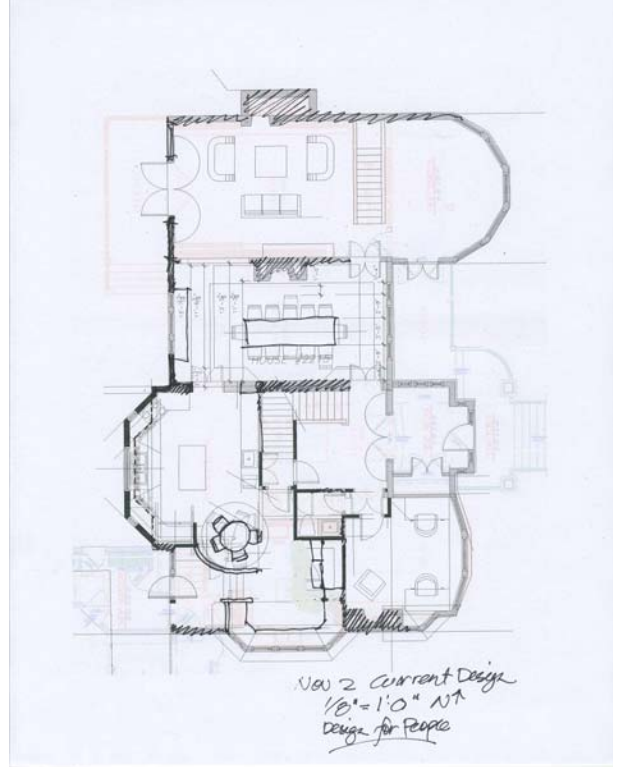
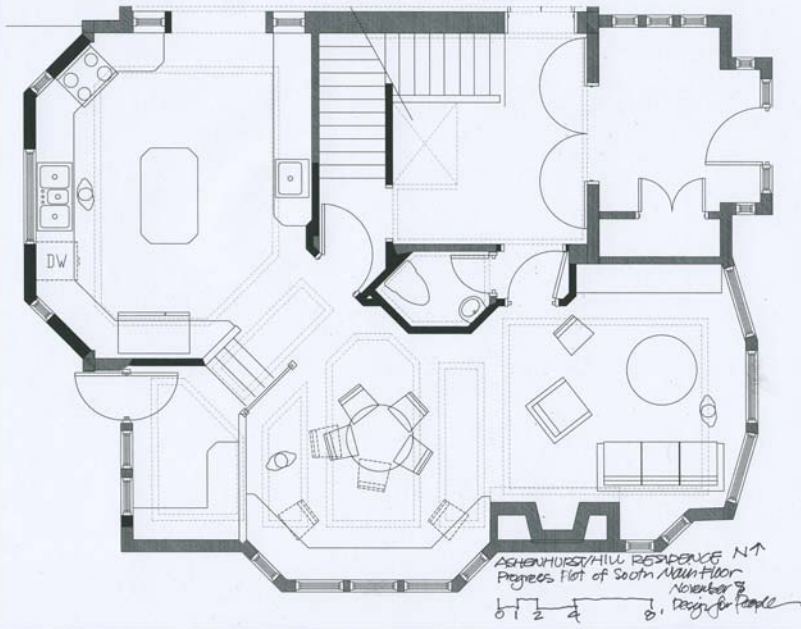
Built Result
(further evolved)

Schematic Design Stage *Typical work-in-progress and sketch presentation plans*
Quick-traced over rough AutoCAD Drafting and Precise Roof Model Massing Model, Tinted in TVPaint



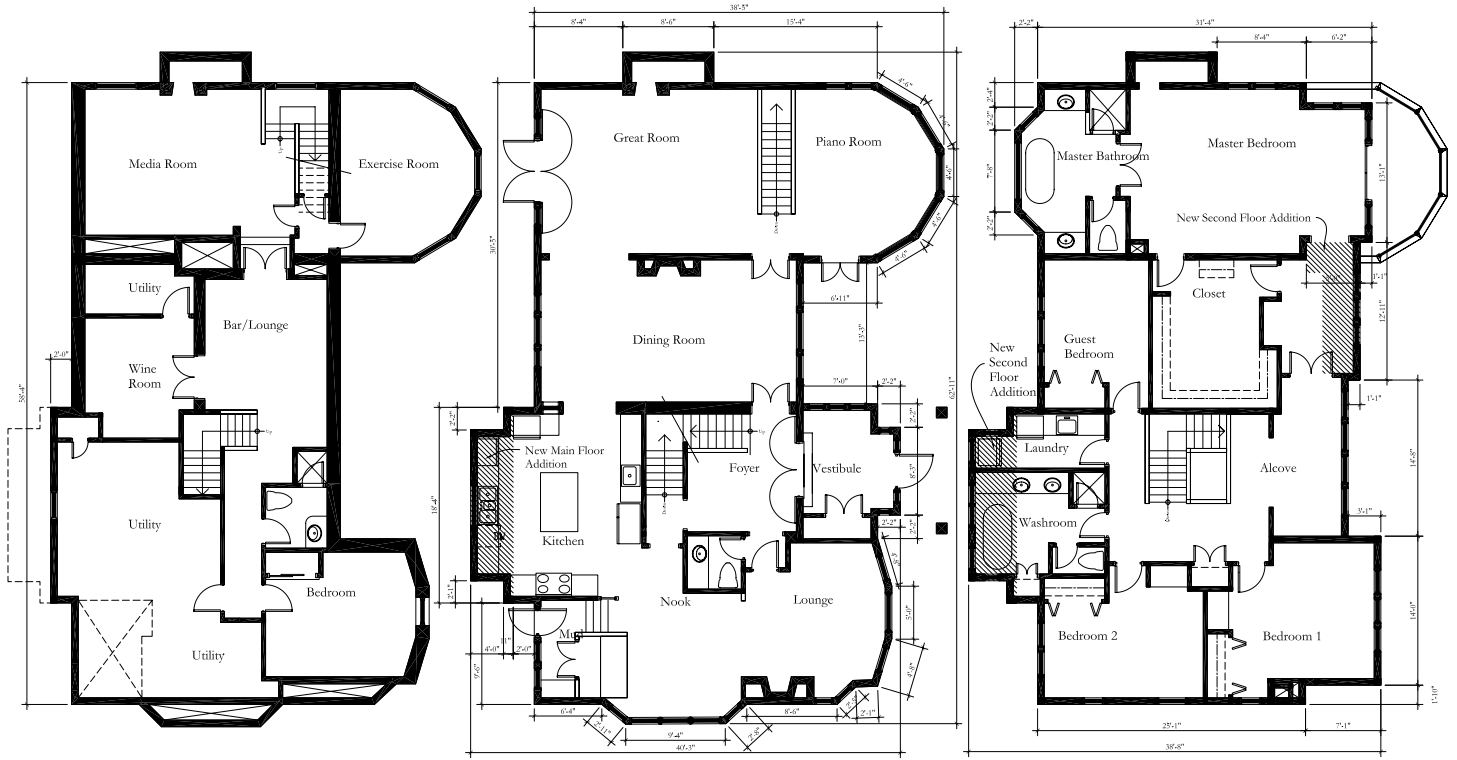
Design Development Exploration Stage

Typical work-in-progress and larger scale sketch presentation plans
Quick-traced over precise AutoCAD Drafting



Design Development Presentation

Precise AutoCAD Drafting



Basement Plan

Main Floor Plan

Second Floor Plan

Post-Fire Repairs and alterations to
The Ashenhurst-Hill Residence
Development Permit Submission December 7th 2010

Design
People

8408
804 - 18th Avenue SW
Calgary Alberta
T2T 0G6
403 - 541 - 1997

devonshire baker
ARCHITECTS INC. REG. ARCHT.
1100 - 10th Avenue SW
Calgary Alberta T2P 1G2
403 - 241 - 1000

Floor Plans

Scale 1/4" = 1'-0" North ^

Page dp 2



Legend

New Asphalt Shingles - Black	New/Existing/ Refurbished Brick - Red	New Stucco - Beige	New/Existing Painted Wood Siding - Green	Existing Stone Veneer - Grey	Existing River Rock - Grey	None: All Tiles and Facades are Painted wood - Green or White Window frames and muntins are white
------------------------------------	---	-----------------------	--	------------------------------------	----------------------------------	---

Post-Fire Repairs and alterations to
The Ashenhurst-Hill Residence
Development Permit Submission December 7th 2010

Design
People

8408
804 - 18th Avenue SW
Calgary Alberta
T2T 0G6
403 - 541 - 1997

devonshire baker
ARCHITECTS INC. REG. ARCHT.
1100 - 10th Avenue SW
Calgary Alberta T2P 1G2
403 - 241 - 1000

East Elevation

Scale 1/4" = 1'-0"

Page dp 3

**Design
Development
Refinements
Stage**



Ashenhurst/Hill Residence
View From South East November 11 2010
1: Current Colour Scheme



Ashenhurst/Hill Residence
View From South East November 11 2010
Exterior Concept 1a



Ashenhurst/Hill Residence
View From South East November 11 2010
2: Light on Dark



Ashenhurst/Hill Residence
View From South East November 11 2010
3: Dark on Light

*Typical
presentation
of
colour options*

*Quick-traced
over precise
AutoCAD
Massing*

*Shading layers
duplicated in
different
colours in
TVPaint.*

*Typical
presentation
of
detailing options*

*Quick-traced
over precise
AutoCAD
Massing*

*Different
layers for
different
details*

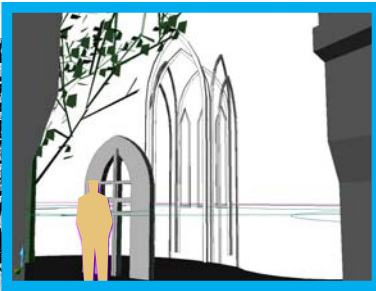
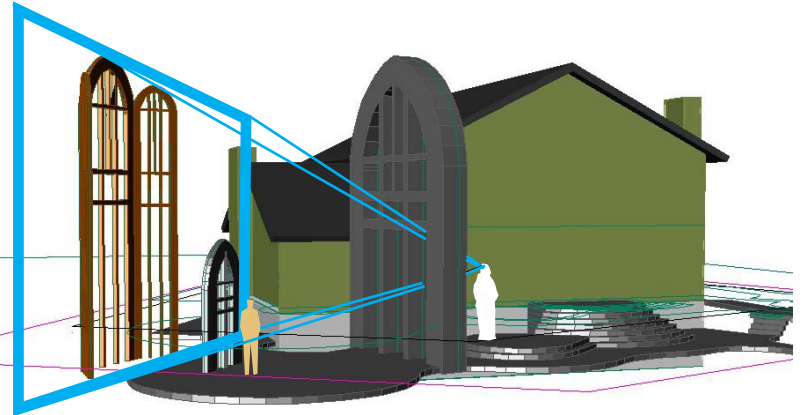
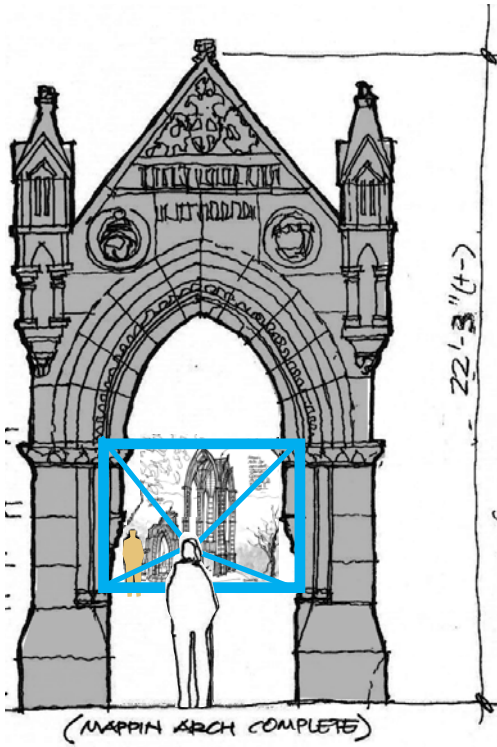
*Shaded in
TVPaint:*

Modelling
Sightlines:

Gothic Backyard

Stone arches both
new and
imported relics

Quick-traced
over precise
AutoCAD
Massing



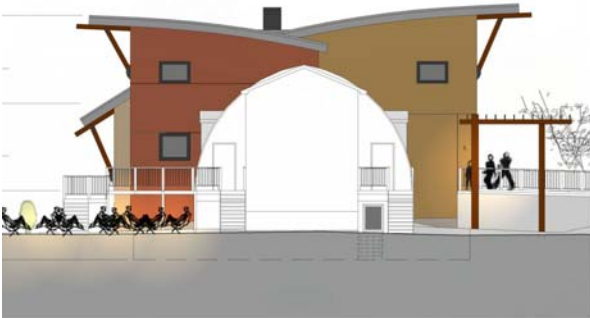
Full AutoCAD Model Presentation Perspective quick-traced over AutoCAD Massing Model Finished in TVPaint



Built Result

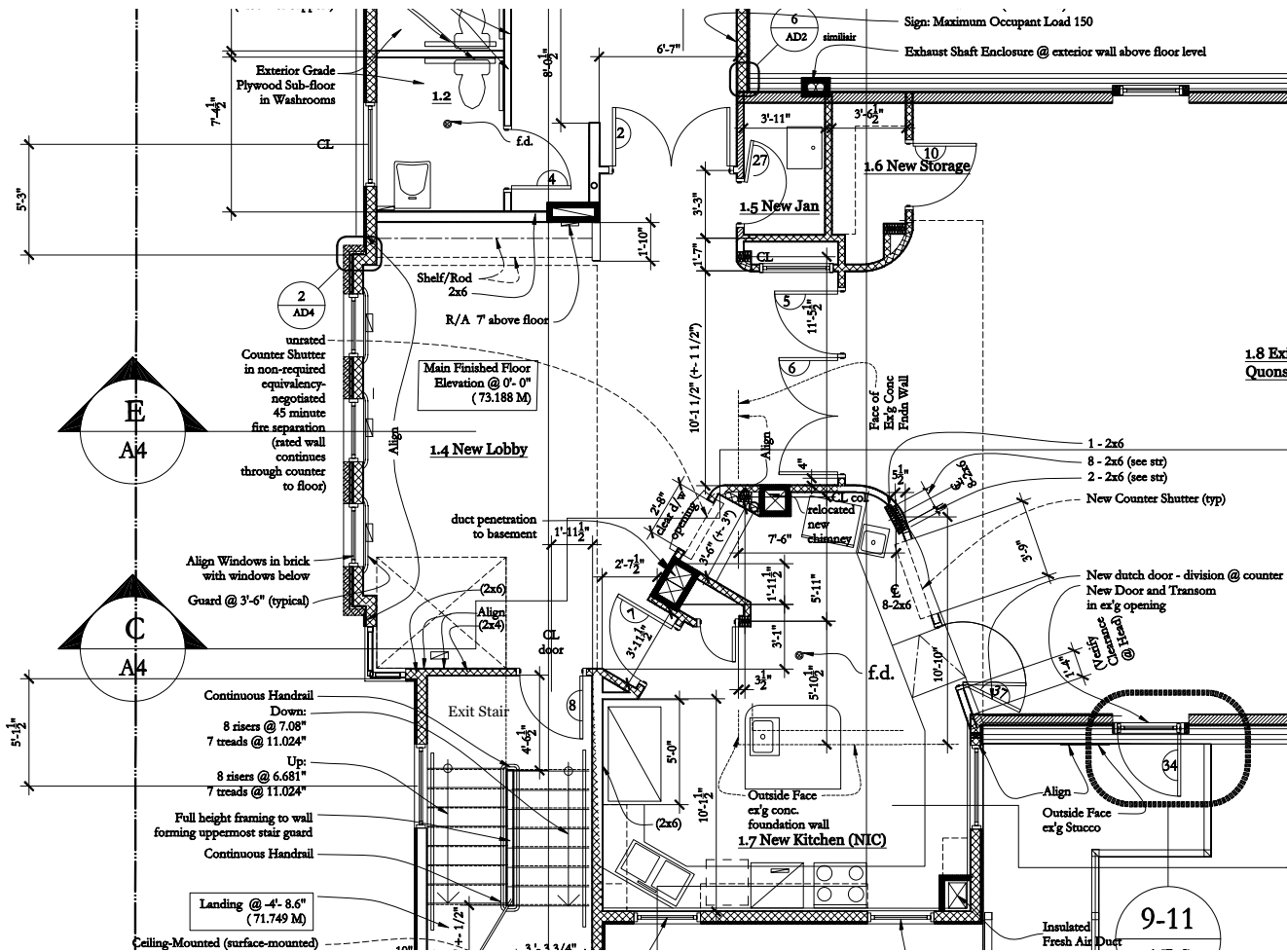
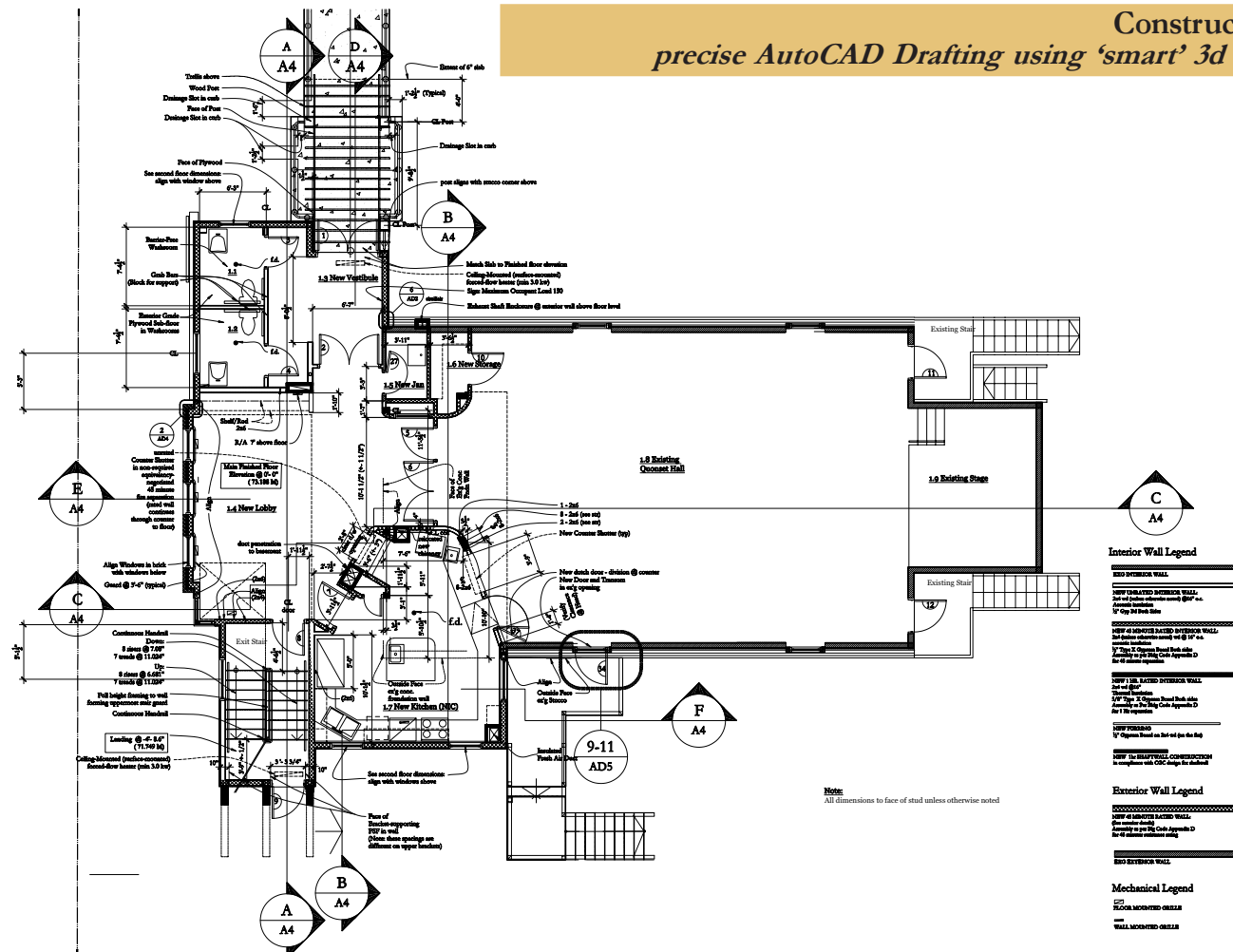


Presentation Elevation exploded from AutoCAD Massing. Detailed in CAD then shaded in TVPaint



*AutoCAD
Generated Renderings
for illustrating massing
features
Tweaked in TVPaint*

Construction Plan
precise AutoCAD Drafting using 'smart' 3d Elements



First Floor

Drawing Scale

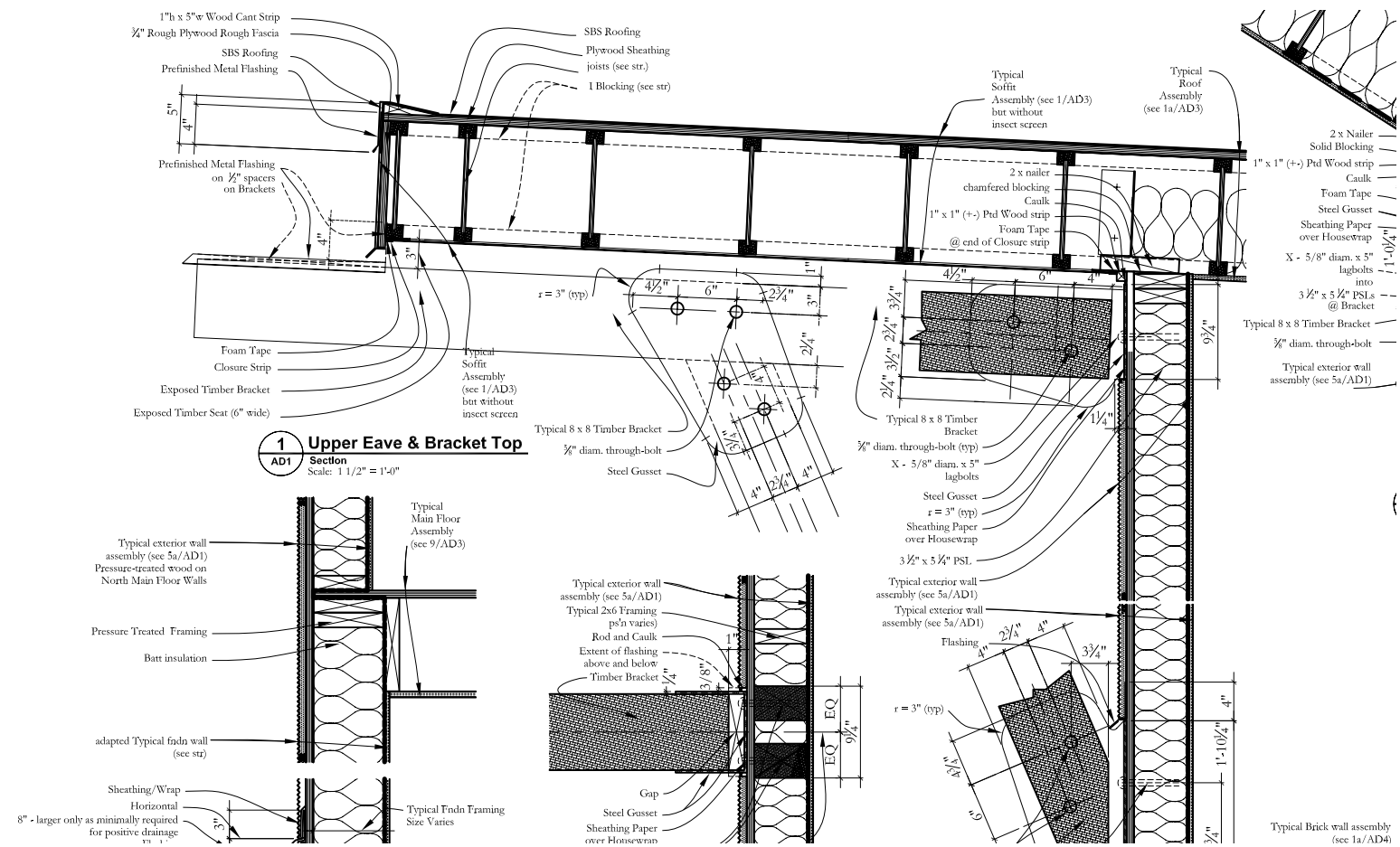
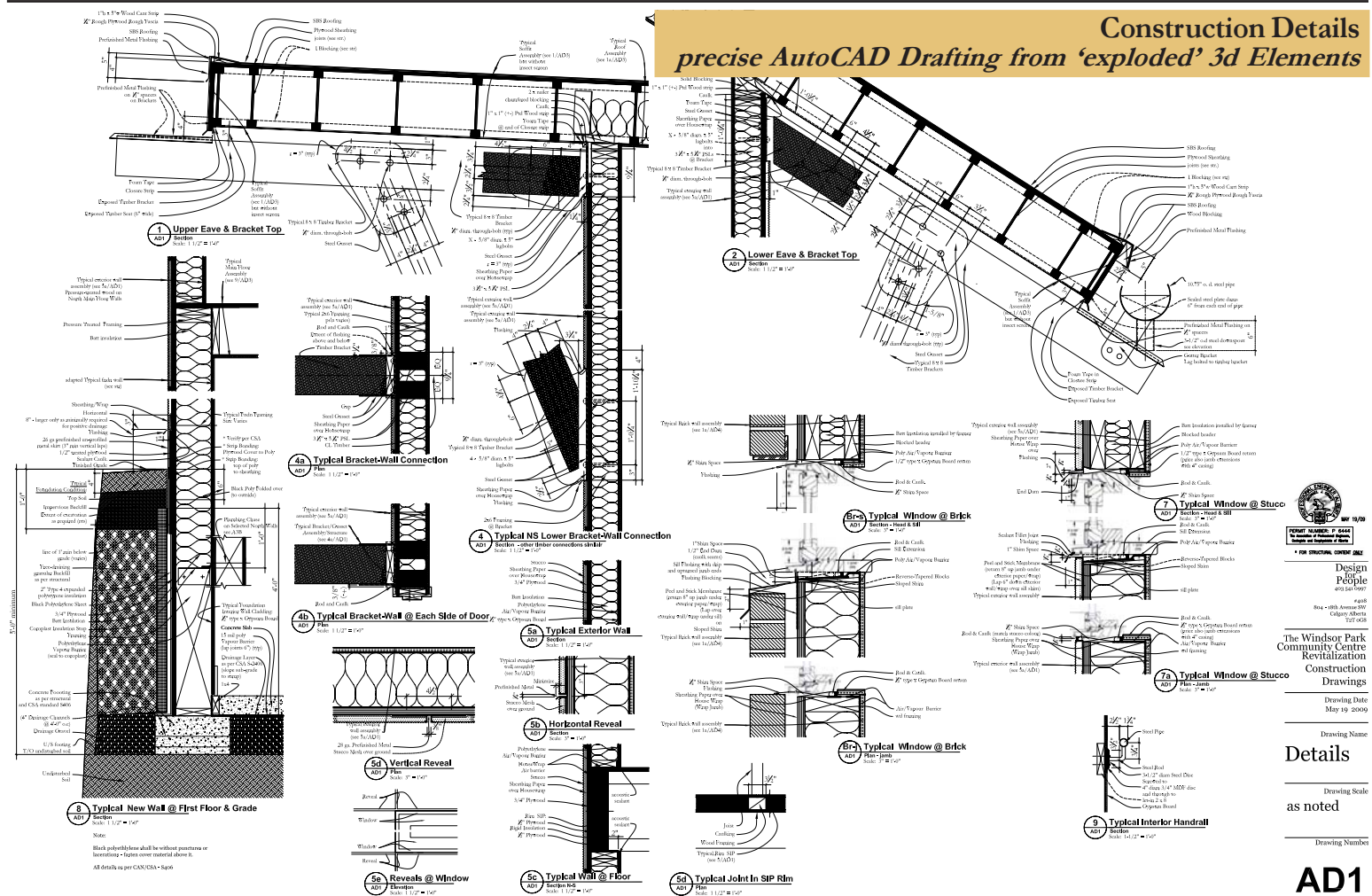
Scale 1/4" = 1'-0"

North^

Drawing Number

A3.1

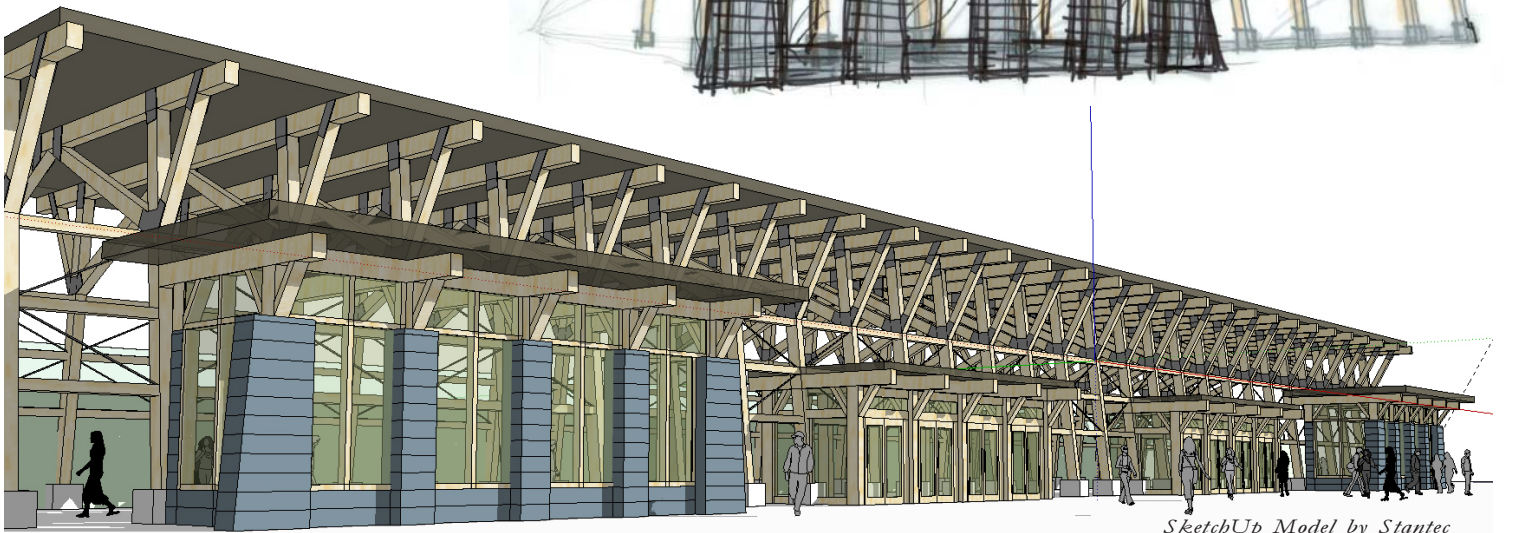
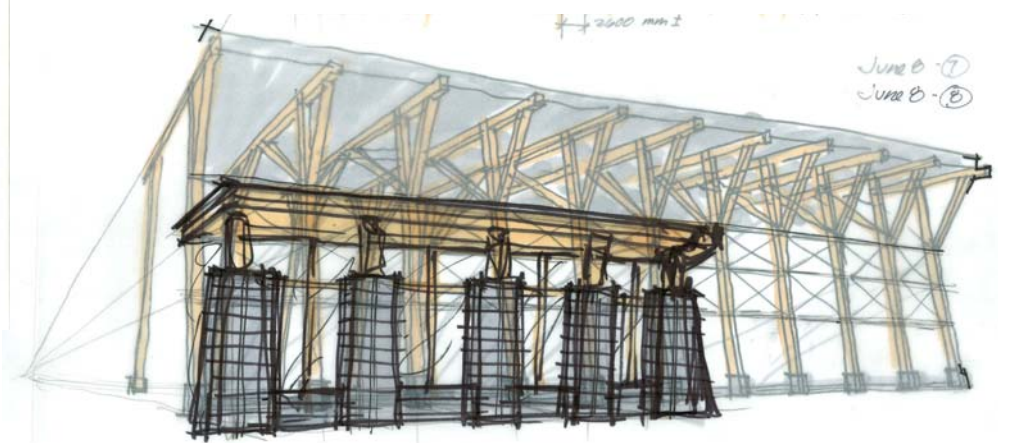
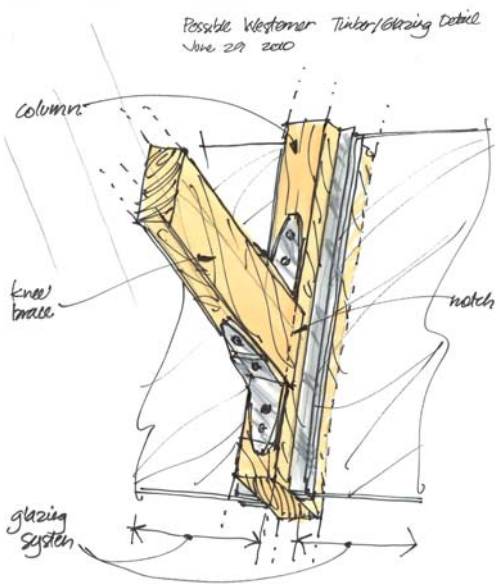
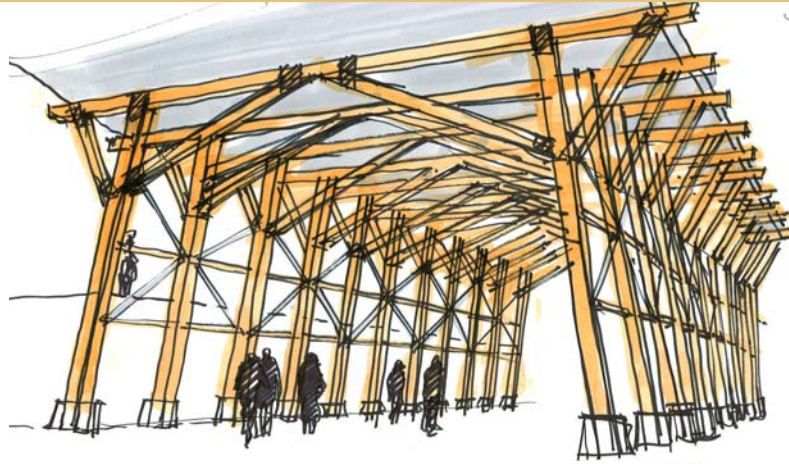
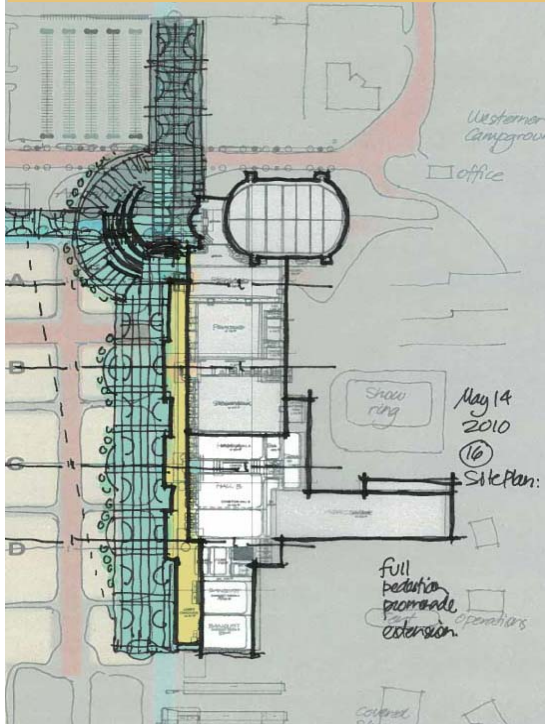
Construction Details
precise AutoCAD Drafting from 'exploded' 3d Elements



Most Efficient Design Workflow for CAD-Generated Presentation Drawings

Typical work-in-progress

Freehand Design Concepts (felt pen on trace) guide modelling by SketchUp specialist



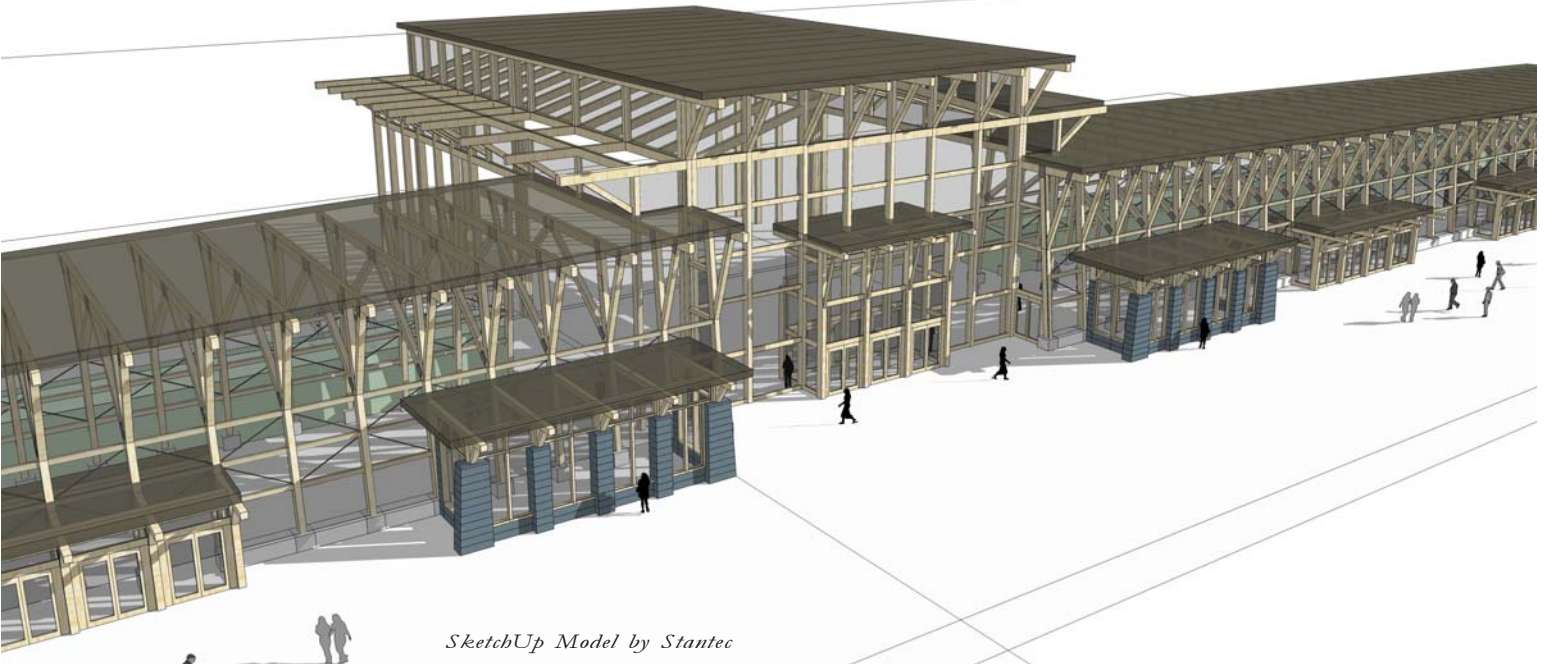
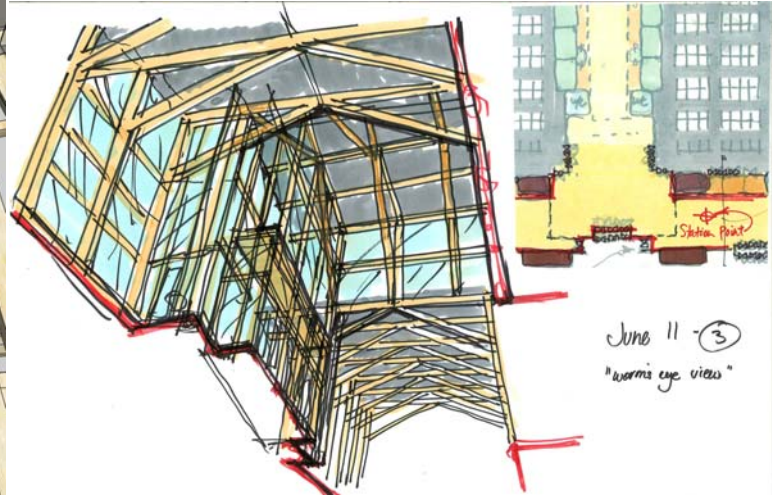
Most Efficient Design Workflow for CAD-Generated Presentation Drawings

Typical work-in-progress

Freehand Design Concepts (felt pen on trace) guide modelling by SketchUp specialist



SketchUp Model by Stantec



SketchUp Model by Stantec

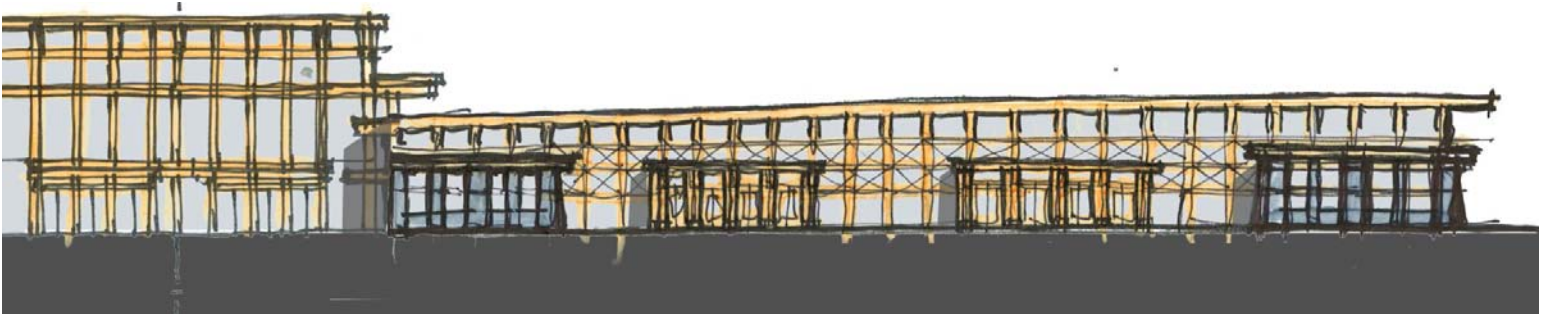
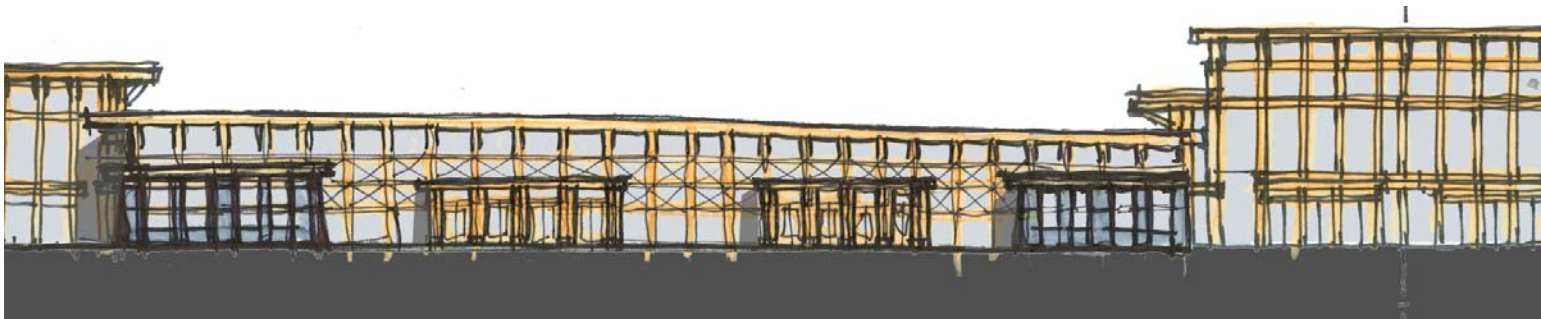
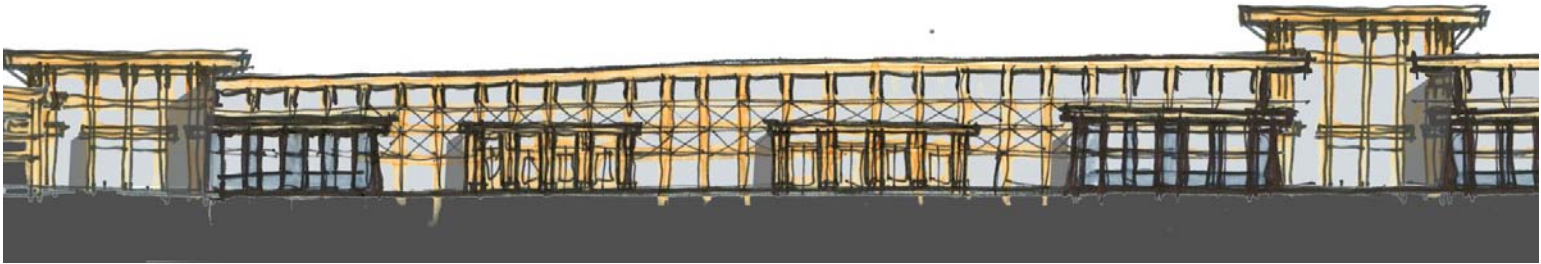
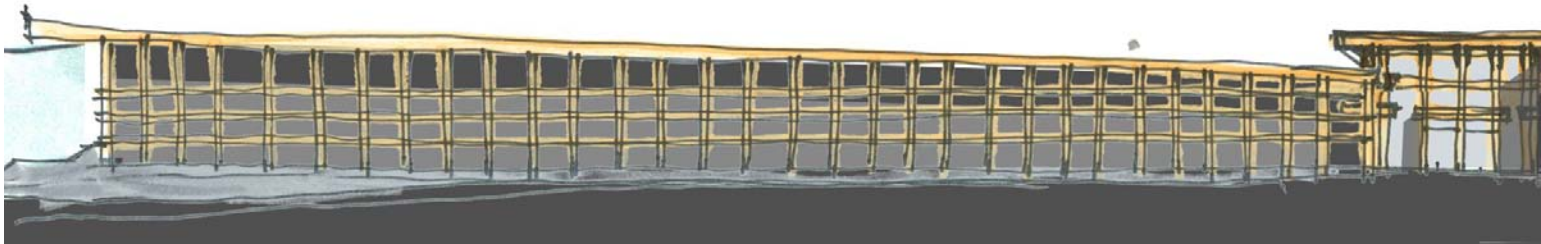


Illustration Styles to Suit Project/Schedule/Budget regardless of Design Workflow

Please see other portfolio segments

